



Pittsburgh Lutheran

March 2007

Concordia Haven I Residents Receive Good News

CABOT—At a meeting with Concordia Haven I residents on Thursday, Feb. 15, President and CEO Keith E. Frndak announced that Concordia will be actively rebuilding Haven I by April. Completion of the new building is hoped for December of 2007 but more likely will be in the early part of 2008. Keith states that “every time we build we try to do it better.”

He has enlisted Haven I residents' input for ideas and pledges to implement up to 10 suggestions. He shared the blueprints for the new building, 60 - 95 sq. ft larger with 115 units. The design resembles Haven II and III with the entrance in the center of the building. A great dining room with the potential to seat 350 and the chapel, designed similar to the one in Haven II, will be located off the grand lobby.

St. Thomas Lutheran, Pittsburgh, Celebrates 120th Anniversary

PITTSBURGH—Although the official 120th anniversary celebration isn't until November, the congregation at St. Thomas Lutheran Church on Sorento Street on Pittsburgh's Northside, began celebrating early this year.

A German Heritage Celebration was held on February 18. A Confirmation Reunion Service is planned for April 1 at 2 p.m. A barbershop quartet will be entertaining members and guests at a Strawberry Festival on June 3 at 2 p.m. The congregational picnic is planned for August and the celebratory worship service for November.

St. Thomas was founded in 1887 and though tiny in numbers, still holds worship services and Vacation Bible School. Rev. Stephen Niermann is pastor (and also serves Faith Lutheran in East Liberty).

By Marie Cox



Mr. Frndak called this new building the gemstone of Concordia's system. The dining room will be partitioned and will include a movable stage and a 15 ft. fireplace and will open to a large patio. The cost to build will be twice what it was in 1990 due to changes in building codes.

Current Haven I residents will be “grandfathered in”, so rates will remain the same if residents choose the same kind of accommodations.

Demolition of the current building will take 20 working days and is scheduled to begin next week.

Checks in the amount of \$1500 were distributed to every Haven I unit on Friday, Feb. 16. Approximately 50 residents applied for additional support and could have been granted as much as \$20,000. Arrival at the specific amount involved a complicated process based on the amount of one's loss, the ability to recover from the loss and the amount insurance would recover. More than \$490,000 was raised; \$250,000 was donated by Concordia Lutheran Ministries. Mr. Frndak emphasized that much time was spent on creating fair distribution and applying stewardship principles as well.

He also announced that Concordia and Lutheran Trust Guide One has come to an insurance settlement, divided into four parts—building loss, loss of furnishings, loss of income and code upgrade costs. He believes that 80-90% of the cost to rebuild will be covered by the settlement.

Stephen Series Caring Ministry Workshop Offered at Calvary

MURRYSVILLE—Learn to be an active listener and reach out to others in a distinctively Christian way at a Stephen Series Caring Ministry Workshop. Calvary Lutheran Church in Murrysville will host the workshop on Saturday, March 17, 2007, at 9 a.m. to 1 p.m. Registration begins at 8 a.m. and refreshments will be served at 8:30 a.m. The half-day workshop consists of three sessions designed both to enhance participants' caregiving skills and to help congregations explore ways to expand their caring ministry.

The workshop will be led by Mike Russo, a Johnstown, PA business consultant who conducts workshops and seminars worldwide and is now a faculty member for Stephen Series Leader's Training Courses. In the first session of the workshop participants learn about the grief process—the stages of grief and how to minister to people in each of those stages. They'll gain the skills and confidence to better care for individuals who are grieving.

The second session provides an introduction to the Stephen Series, a system of lay caring ministry through which congregation leaders can equip members to provide one-on-one Christian care to people in need. The final session of the workshop defines “How to Care in a Distinctively Christian Way.” Participants learn what makes Christian caregiving unique and how they can use resources like prayer, blessings, and Scripture in their caring for others.

The cost of the workshop is \$15 per person or \$50 for a group of four or more from the same congregation. To register to attend the Stephen Series Caring ministry Workshop at Calvary, contact Stephen Ministries at 314.428.2600. You may also register at www.caringministry.org on line.

Providence Pharmacy Quadruples in Four Years

CABOT—In February of 2003, Concordia Lutheran Ministries opened Providence Pharmacy at the Cabot campus in an effort to supply residents with a convenient place to purchase prescription drugs. Residents have utilized this service on a daily basis.

When the doors opened almost four years ago, Providence handled resident medication needs at the Cabot campus and carried a staff of five. Fast forward to the present and they are now handling prescriptions at Concordia's Rebecca Residence, the Orchard, and Ridgewood Place, as well as St. John's Care Center and Passavant in Zelienople, facilities owned and operated by Lutheran SeniorLife.

The staff has also quadrupled, as there are now 22 employees.

The partnership with Concordia Lutheran Ministries was established from a business relationship between Concordia C.E.O. Keith Frndak and former Providence C.E.O. Marty Garda, who was working as a consultant pharmacist at the time. He said that with the amount of residents Concordia serves, it was an easy decision to introduce an in-house pharmacy.

Garda left Providence last November to pursue other ventures. He was replaced by Providence staff pharmacist Rich Zabinski.

Today, Providence Pharmacy dispenses 16,000 prescriptions per month, which comes to about 615 per day. The daily process, according to Pharmacy Technicians Christy Fox and Lisa Wilsoncroft, is much like any other pharmacy:

- ◆ Orders are faxed or called in to the pharmacy, which has 24-hour service.
- ◆ Orders are then separated according to emergency or non-emergency standards.
- ◆ Orders are separated by facility.
- ◆ The medication is packaged into what are called blister packs by the Pharmacy Technicians.
- ◆ The packaged medication is rechecked and put into delivery totes, separated according to nursing stations in the designated buildings.
- ◆ Three drivers then deliver the medication to the various locations twice per day during the week, and once on Saturday.

The mission of Providence Pharmacy is to provide quality service to the individuals Concordia serves. Beyond that standard, it is their intent to generate revenue to fund missions and efforts both locally and internationally. For example, revenue from Providence has locally helped fund a food bank in Homewood, and internationally, funded the building of a facility in Africa for children orphaned by the effects of AIDS.

In the near future, the Providence facility will move from its current location in the ground floor of the Lund Care Center to what is now the Oertel Care Center. Once they move and have more space, additional growth will be likely.

The pharmaceutical industry is very much like the nursing industry in that there will always be a need for the service as long as the quality of the service remains high, according to Pharmacy Director Rich Zabinski.

*By Frank Skrip
Public Relations Assistant*

Concordia's Second Annual Fashion Show Scheduled at Butler Country Club

CABOT—The Spring Fiesta Fashion Show is scheduled for Saturday, May 5th at Butler Country Club off Route 8 North, beginning at 10:30 a.m. with registration, the basket auction and clothes shopping, followed by lunch at 11:45 a.m. "Fashions by Phyllis" will be shown at 1:30 p.m. There will be more time to shop after lunch as well. "Fashions by Phyllis" retail stores are located in Bellevue, White Oak, Monongahela and Meadow Lands.

This year's goal for the event is \$10,000 profit. Tickets are \$25. Due to limited seating, our deadline is April 30th. No tickets will be sold at the door. Make event checks payable to Concordia Lutheran Ministries and send to Concordia Lutheran Ministries, Attn: Development Office, 148 Marwood Road, Cabot, PA 16023. All proceeds will fund its \$2.5 million Capital Campaign, established to support the \$12 million Lund Care Center Expansion.

For more information or to make reservations, call Shirley Freyer, 724.352.1571 ext. 8266.



Zabinski Named Director at Providence Pharmacy

CABOT—Providence Pharmacy, the in-house pharmacy at Concordia Lutheran Ministries, recently promoted a staff pharmacist to head operations.

Rich Zabinski, a 1991 graduate of Duquesne University with a Bachelor of Science in pharmacy, begins his tenure as Pharmacy Director with over 16 years experience in long term care, formerly working for Klingensmith, Nursing Center Services (now Omnicare), and Pharmerica. His responsibilities include directing clinical operations and coordinating pharmacists.

He said making the transition to Pharmacy Director was smooth, thanks to the mutual respect and understanding of the team at Concordia - unmistakable during the Nov. 5 fire at the Haven I facility in Cabot.

"The relationship (with Concordia) was most evident during and after the fire when nursing staff, Medical Director Dr. Fred Fioravanti, pharmacy staff, and I worked feverishly to meet the medical needs of the displaced residents," Zabinski said. "It was a real team effort."

Zabinski said his favorite element of this new position is the understanding that he is providing a service that truly helps so many people.

He currently lives in Adams Township with his wife Andrea and 15-month-old son Logan. He was born and raised in Vandergrift and enjoys golfing, skiing, and music. He is a freelance jazz drummer and percussion arranger/instructor for Kiski Area Marching Band.

**Free Concert of Sacred Music
Scheduled for April 22**

MT. LEBANON—A concert of sacred music will be presented on Sunday, April 22 at Our Savior Lutheran Church, Mt. Lebanon.

The free concert, which starts at 3:30 p.m., will benefit Pittsburgh Area Lutheran Schools. Performers include The Pittsburgh Lutheran Chorus; William Hamilton, tenor; the Good Shepherd (Whitehall) Handbell Choir; Charles Bieri, on the organ; Kara Quevi, flute; Jennifer Meyer, cello; and George Fischer and Brennan Petras, trumpets.

Those attending will be invited to sing five hymns during the concert. A reception will follow after the concert at 5 p.m. The church is located at 698 Country Club Drive in Mt. Lebanon.

**Call for
Auction Baskets**

Concordia invites your church or women's group to donate an auction basket to the Second Annual Fashion Show "Spring Fiesta" at the Butler Country Club on Saturday, May 5th. The themed baskets could include gift certificates and should be worth \$50. Baskets will need to be ready by April 20th for basket auction preview on Thursday and Friday April 26 and 27 at Haven III. Contact Anzie Kelley, Director of Nursing at 724.352.1571, ext. 8288 as soon as possible with your basket theme. Tickets for the Fashion Show are available for \$25 and can be obtained by calling Dorothy Blankenbuehler at 724.352.4308 or Shirley Freyer at 724.352.1571, ext. 8266. Registration begins at 10:30 a.m.



Vol. 76, No. 3

The Pittsburgh
Lutheran

Published in the interest of the Pittsburgh Lutheran Area Ministries (PALM) and Concordia Lutheran Ministries, Cabot, PA

The Pittsburgh Lutheran

The Lutheran Center
412.621.2630, #2

**All news must be submitted to
Editor by the 15th of the month.**

Editor / Business Manager

Kate A. Hallock
107 Saybrook Harbor
Bradfordwoods, PA 15015-1319
724.935.9595
Fax: 412.369.0599

E-mail: KAHallock@aol.com

**Pittsburgh Area
Lutheran Ministries**

www.palmpa.com

PALM President

Terry Nelson Taylor
103 Eastern Avenue
Aspinwall, PA 15215
Cell: 412.480.0903
Home: 412.782.6325

Email: TerryNTaylor@earthlink.net

PALM Treasurer

Cynthia Barnes
Send checks to The Lutheran Center
531 N. Neville Street
Pittsburgh, PA 15213

Concordia Lutheran Ministries

President/CEO: Keith Frndak
Chairman, Board of Directors: William Kolb
615 N. Pike Road, Cabot, PA 16023
724.352.1571

www.concordialm.org

Printed by Slavia Printing Company
157 McNeilly Road
Pittsburgh, PA 15226
412.343.4444

More Troops Overseas Need Our Support

If you know someone who is serving in the Middle East (or anywhere!), send the form below to Operation Lifeline for prayers and support.

Operation Lifeline

RANK _____

NAME OF SOLDIER _____

DEPLOYED DATE _____

EXPECTED DATE OF RETURN _____

DEPLOYED TO WHAT COUNTRY _____

ADDRESS (please separate by line each part of the address)

CONTACT PERSON _____

RELATIONSHIP TO SOLDIER _____

PHONE NUMBER _____

Mail to: OPERATION LIFELINE
Christ Lutheran Church
1302 E. Washington St.
New Castle, PA 16101

Or e-mail: OPERATIONLIFELINECLC@MSN.COM
Phone: Ann Houk 724.652.6484



**COLEMAN
FINANCIAL SERVICES**

61 McMurray Road, Ste. 200
Pittsburgh, PA 15241

JOHN A. COLEMAN
Financial Advisor

Securities Offered Through
Geneos Wealth Management, Inc. 412-835-8003
1-800-380-8003

www.JohnColeman.net

“Top O’ the Momin’ to Ya, Martin-Me -Boy!”

That’s not the usual greeting Blessed Martin Luther might have heard in his day, but those Lutherans in search of a good saint to remember this March might well hearken to an Irish greeting like it. The Ashby Liturgical calendar, Lutheran version, lists a number of notable Christians of the distant past, including 1 pope (Gregory the Great), several Englishmen, (the Wesleys, Archbp. Thomas Cranmer, and others), a Norwegian (Hauge), an El Salvadoran (Archbp. Romero), some ancients (Perpetua, Cyril of Jerusalem), and of course, SS Mary & Joseph—all in all a quite ecumenical and cultural blitz! But, if you ask most Americans, and Lutherans, in particular, who’s the most popular saint for March, you’ll get a nearly 100% response with St. Patrick. And, unfortunately, most of those responses would more likely refer to his “day” with its celebratory excesses rather than to his achievements and ministry. To most people, St. Patrick simply means “Irish” and popular, sociable hospitality (read “green beer,” parades, green strip down the boulevard).

A quick glance at any biographical sketch of St. Patrick (and it’s brief due to lack of solid historical evidence) reveals a man of single-minded passion for mission work and the care of souls. The most telling evidence for that is his solid theological training and his long, persistent service in the mission field of Ireland. He lived to at least 65 years of age, by any dates known to us, and perhaps well into advanced age. There is, however, no word of his “retirement” or collecting pension checks! He returned to the land of his adolescent captivity, possessed of a firm Call to spend his life for his Lord Jesus Christ and the salvation of many.

While much of the work and lives of those leading believers are lost in the mists of swiftly passing years and lack of records, we do know that St. Patrick and those like him worked diligently to plant the Faith by establishing mission churches and monasteries. Nor were their years any more violent and ignorant than ours today. We like to think of them as living in primitive times of political and social chaos. We would be better employed to recognize that very situation in our own time and world. Mere tribal wars in Ireland or Britain of the 5th century were nothing compared to WWII, vari-

ous Communist slaughters of the last century, or the continual genocide campaigns in Africa and Asia in our lifetimes! Such should not intimidate us nor divert us from urgent speaking the Jesus News to everyone around us any more than those less technologically-advanced saints like Patrick shrank back from the challenges and obstacles which they faced in an unfamiliar land. You would think that we Christians today would be working without let-up to proclaim Jesus as Lord and Savior every day! You would be mistaken. For, we are believers of an age where “someone else” is called to be the missionary, where “someone else” will have to talk about Jesus in our very own neighborhoods. We are too busy being members of our congregation with all that entails. We are too aware of our own lack of knowledge, lack of courage, and lack of remorse over the fate of men and women dying without a Savior. If only Jesus would come down and do it all Himself, as He did once before! It’s almost funny, but I don’t think believers in any other age actually thought that! The Apostles and their descendants didn’t have time for that thinking, so busy they were with the Good News and setting up churches. The later believers, well, their situations were often overwhelmed by events and gross ignorance that can be understood and even forgiven. Yet, even then, God raised up men and women who pursued the Kingdom of God and its advancement by their own dedication and loyalty.

What possible excuse could we have, or will we offer to our Lord, for our “armchair Christianity,” our comfortable or complacent Christian busyness? Can we break free from inertia, lack of motion? Will we make the attempt this Lent to awaken to our failures, our inaction, and ask God to fill us with the same zeal which awakened Patrick to leave his homeland for a wild and godless island mission field? A general feature of Irish Christianity that lasted for centuries was its penitential spirit, a reforming and conforming mindset to the grace of God and the ideals of Christ’s life: poverty, obedience and evangelism. For those traits, St. Patrick is a worthy patron saint for Lutherans as well, during Lent and every day of our lives. None of us will likely get a public “saint” title, nor be known for using shamrocks to teach about the Trinity,

nor rid our neighborhoods of snakes! But, far better it would be if we were “little Patricks” (or, even “little Christs,”) by our faithful speaking the Jesus News all the days of our lives.

People like to lay claim to being even a mite Irish for the St. Paddy’s day, just to feel a bit happy for a reason to celebrate! It’s okay for Lutherans to celebrate St. Patrick, too, for he was a great saint in the Lutheran tradition. Just take it from Marty O’Luther!

Rev. John Weldon
Epiphany, Penn Hills

Make Plans Now to Join In the Beginning Day Trip

Experience the dawn of creation at a performance of the most unforgettable account of Genesis. Be there as God gathers the seas, forms creatures and vegetation, and breathes life into His ultimate creation—man.

Enhanced by magnificent staging, stirring musical compositions and captivating live and animatronic animals, the stage at the Millennium Theatre in Lancaster County will bring to life a world more fantastic than the greatest of imaginations!

In the Beginning, a production of Sight and Sound Theatres, is just one of the activities you could enjoy on a day trip with Christ Lutheran Church, Forest Hills.

The charter group will depart at 7 a.m. on Saturday, May 19 from Christ Lutheran. A smorgasbord at the Family Cupboard Restaurant at noon still leaves time for shopping before the 3:45 p.m. performance of *In the Beginning*. The trip home includes a supper stop, with estimated arrival back at Christ Lutheran at 11:30 p.m.

At least 35 are needed for the charter. The price is \$131 for adults; \$108 for teens 13-18 and \$91 for children 4-12 and includes deluxe motorcoach transportation, reserved seat for *In the Beginning*, the smorgasbord midday meal and taxes and gratuities. All shopping and the supper stop are your own responsibility.

To make your reservations, call Ann Fonas, 412.242.2169, or Christ Lutheran Church, 412.372.7173.

International Student Ministry

What God Can Do

SLIPPERY ROCK—Can international students come to believe in Jesus even when they'd been brought up with little or no knowledge of the Messiah? Yes, they can have their hearts opened. How? Because God can do anything. All we need to do is to be available to tell them the Gospel story.

Last fall All Saints Lutheran Church and Student Center held their traditional welcome meal for students who attend Slippery Rock University. Almost no one came to the meal because SRU had scheduled trips to the mall at that same time. One of the few who came was Ken from Japan and he didn't even stay for the meal. He had only come to ask if he could study the Bible with me because he wanted to learn about Jesus.

Ken's request thrilled me, but I was also skeptical. I thought that Ken, a philosophy major who planned to take a comparative study of religions at SRU, would probably change his mind about studying Jesus when it got into a really serious study of the Bible. But I underestimated the power of the Holy Spirit! Ken has come regularly to study the Bible, even when he is very tired; even during semester breaks; and has asked for longer time to study.

I asked this warm, friendly student, who smiles so easily, how he became interested in Jesus since he didn't grow up learning about the Christian faith. He mentioned a professor in Japan who was also a pastor. He said they'd had some discussions. He said a person who is not even a Christian has told him some things too. Actually, his answer was vague, but what was crystal clear was that he really wanted to know what Jesus taught and did. After one of the first studies he even took me by surprise by asking, "Mrs. Mennell, can we pray?"

We are studying Luke verse by verse. We use the Concordia footnoted Bible and the People's Bible commentary on Luke. We take our time; we don't rush. We read the verses until Ken can visualize what the Bible story is describing, until he can see Jesus selecting His followers, showing where to fish, and asking who they believed He is.

One Friday, after reading about Peter's confession that Jesus is the Messiah, it seemed like a good time to ask Ken, "So what do you think about



International students enjoyed the Christmas open house at Rev. Michael Scheer's home, where they felt very much at home. Left to right: Kanchana Hiran Jayasekara (known as Hiran) from Sri Lanka; Elena Chernikh, Uzbekistan; Baraka Bitariho, US; Augusta Mennell; Kenzaburo Tsukuda (known as Ken), Japan; Mr. Mennell. Photo taken by Heidi Scheer.

Jesus? Who do you believe He is?" That question didn't fluster him. Ken quickly replied that he believed Jesus is God's Son. I didn't believe that he really understood the question. After all, he was still struggling to grasp English terms like "crucifixion" and "resurrection", so could he really understand who Jesus is?

Not long after Ken said that Jesus is God's Son, a member of All Saints congregation, Bill Kildoo, who hadn't met Ken, introduced himself to Ken and asked if he was a Christian. Ken said no, but that he "was studying the Bible with Mrs. Mennell." In the next class, Ken said that the reason he believed that he is not a Christian is because he does not "do" Christianity. For example, he does not come to worship. At the right time the Holy Spirit will show Ken that it is not about what he does that makes him a Christian, but that it is all about what Jesus did and does that will make him a Christian.

Ken's story—really, God's story—hasn't had its last chapter written yet. Ken watched the Jesus video in Japanese and exclaimed how easy it was to understand the story of Jesus in his language. He did see The Nativity Story, which he understood. He will continue studying Luke and will continue to ask good questions like "Are we God's neighbor?" He will take a comparative religions course at SRU at the same time that he studies Luke. He continues to ask for prayer at the end of each class. This student, who loves philosophy, art, and poetry,

didn't grow up in the Christian faith, but God is opening doors. As long as I am a campus ministry director I will never cease to be amazed by what God can do. This is not really Ken's story, but God's.

*By Augusta R. Mennell
Campus Ministry Director
All Saints Lutheran Church and
Student Center*



**Samaritan
Counseling Center**
Using the Resources of Faith

Main Office: 414 Grant Street ♦
Sewickley, PA 15143 ♦ 412-741-7430

1601 Brighton Road Pittsburgh, PA 15233 412-322-5630	201 E. Jefferson Street Butler, PA 16001 724-287-2567
345 College Avenue Beaver, PA 15009 724-775-4673	5875 Heckert Road Bakerstown, PA 15007 724-443-4110
322 Hannahstown Road Cabot, PA 16023 724-352-7117	E-mail: smrtncoun@aol.com

**Sponsor a
Radio Sermon
Today**



If you would like to sponsor a broadcast, send your donation to Immanuel Lutheran Church, 420 Fifth Street, Braddock, PA 15104 (note Radio Ministry on your check) and include a note about the reason for the sponsorship (memorial, birthday, etc.) Full broadcasts cost \$150, but any donation is appreciated!

Campus Ministry

First Trinity Changed My Life Forever

OAKLAND—First Trinity has meant a great deal to me over the past four years. I stumbled upon the church one day just to grab some free food at a barbecue and it ended up changing my life forever.

Over the last couple of years I have received tremendous support from the members at First Trinity. From an anonymous donation to get me home for a family emergency, to the friendships that will last a lifetime, First Trinity has become my favorite place to be in Pittsburgh. Not only have I grown as a person through the support here at First Trinity, but also I have grown in my faith.

I was confirmed as a Lutheran here my freshmen year and because of the support of both Pastor Eric Andrae and Pastor Douglas Spittel, I have learned more about what my faith is and what it means to me. I graduate next month: As I leave Pittsburgh, I am truly sad to be leaving the one place where I always had people and



God to count on. Although I will be moving on, I now have a strong foundation in faith and God to carry me on and I have everyone at First Trinity to thank for that. God bless the campus ministry: First Trinity has given me many experiences that I will never forget.

*by Nicole Thoman
President of the University of
Pittsburgh's Lutheran Student
Fellowship chapter, (Class of 2007)*

Above, Nicole is the first person on the left, second row. Rev. Andrae is second from the right, second row. Photo by Paola H. Andrae.

To support your campus ministry at First Trinity, please make checks out to "First Trinity," write "campus ministry" in the memo line, and mail to LCMS Campus Ministry at First Trinity Lutheran Church, 535 N. Neville, Pittsburgh, PA 15213. You may contact us at: 412-683-4121 x2 or ERA@FirstTrinity.net.

The Rev. Eric R. Andrae

LCEF


Invest in Your Values

In our increasingly complex financial world, knowing where to invest your money is not an easy choice. There are brokerage firms, insurance companies, and banks—to name a few.

And there is also LCEF.

The dollars you invest at LCEF serve a higher purpose. While your funds earn a competitive interest rate for you, they also provide LCMS churches and schools the opportunity to share the Good News of Jesus with others. Your LCEF investments support the Great Commission by providing low-cost loans to LCMS churches and schools, giving new mission starts an opportunity to expand God's Kingdom, and helping rostered church workers with residential and consolidation loans.

**Make an investment with eternal significance. Invest a portion of the blessings God has given to you with LCEF.
Your dollars *do* make a difference!**



Lutheran Church Extension Fund
PO Box 229009 • St. Louis, MO 63122-9009
1-800-843-5233 • www.lcef.org

LCEF is a nonprofit religious organization; therefore, LCEF investments are not SIPC- or FDIC-insured bank deposit accounts. This is not an offer to sell investments or a solicitation to buy. The offer is made only in states where authorized and solely by LCEF's Offering Circular.



Kammerchor to Perform March 16 at St. Luke

CABOT—The Kammerchor (chamber choir) of Concordia University Wisconsin will be performing at St. Luke Lutheran Church and School on Friday, March 16 at 8 p.m.

Rachel McCall, a former St. Luke school student, attends Concordia University and will perform with the choir. The group will sing at the conclusion of St. Luke's annual Art and Science Fair.

Kammerchor originated under the direction of Dr. Kenneth T. Kosche as a small vocal group selected from members of the Concordia Chorale. In 1981 Kammerchor became established as Concordia's touring choir and Concordia Chorale became the chapel choir. Tours have taken the choir all over the U.S. and abroad, and has provided The Lutheran Hour broadcast with recorded music.

A Unity Success Story: Former Student Runs for Pittsburgh City Council Seat

HOMEWOOD—A former student of the Unity Lutheran Community Mission's After School Outreach Children's Ministry is now in the race for a seat on the Pittsburgh City Council. Rachel Cooper attended the After School Outreach Children's Ministry and eventually became a helper. She completed her high school education and also graduated from college. She is now ready to give back to her community. Rachel is beginning to campaign for the District 9 seat on the Pittsburgh City Council. To learn more about her, log on to her web site: www.rachelforcouncil9.com for more information.

Also Unity is in great need for new volunteers for the After School Outreach Children's Ministry. The program is held Monday through Thursday from 3 to 6 p.m. Even if you are only able to help an hour a week, it would be greatly appreciated. There are many simple tasks such as serv-

The Pittsburgh Lutheran Center for the Blind **January Meal Italian-Style**

OAKLAND—On Saturday, January 27, 2007 the Pittsburgh Lutheran Center for the Blind held its first meal of the new year. Eleven guests took part in the pre-meal Bible study conducted by the Rev. Douglas Spittel. When it was time to eat, those 11 were joined by six other guests to dine on Italian fare.

Though there was no formal entertainment scheduled for the meal, some poems were read. Some announcements were made, guests shared prayer requests and birthdays were mentioned, followed by the ever-popular signing of Happy Birthday. Many then attended the Vespers service.

Those who helped in January included members from the congregation of First Trinity and a youth group from Good Shepherd Lutheran Church. The wedding soup was generously provided by Mrs. Rossi.

Whether it is your time, talent or treasure, we would not be able to continue our mission without help. Thank you, one and all, for your support of the PLCB. If you would like more information on how you can become involved, call 412.682.1800 or e-mail director@plcb.net.

by Sherri Crum, Director

ing food, or just helping a child read a story. Please contact Rev. Reholma McCants at 412.731.2811.

Hymnals for Haiti

PALM has organized an appeal for funds to purchase Bibles and hymnals for LCMS members in Haiti. The PALM Board assisted in the funding for Rev. Reholma McCants, PALM Board Chaplain, to travel as a missionary to Haiti last June to share his After School Outreach Children's Ministry with the Lutheran Church at Jacmel. This Bible and hymnal project began when Rev. Marky Kessa of Haiti came to Unity to speak at the Harvest Festival in November. During his visit, Rev. Kessa approached the PALM Board to create a broad-based appeal in order to provide to much needed hymnals and Bibles in their native French language for the rapidly growing LCMS churches in Haiti. The church in Haiti is able to benefit from a government contracted publisher discount so that each hymnal and Bible will only cost \$6 in U.S. currency.

Already several congregations have come forward to help. Trinity Lutheran Church in Glen Savage has contributed \$816 to the Bibles and Hymnals for Haiti Project. Unity also donated funds during Rev. Kessa's visit. Currently Christ, Forest Hills, has several fund raising projects in progress for this effort. Sue Hanna of St. John, Milvale is currently working with youth in the area to develop unique fund raising ideas. Any individual, group or organization may send their donations payable to PALM with the designation "Haiti Hymnal and Bible Project." The goal is to raise a total \$5,000 which will provide additional hymnals and Bibles for the LCMS churches in Haiti. PALM is willing to match your dona-



LCMS Lutherans in Haiti at a Bible Study, where there are more people than places to sit and not enough hymnals and Bibles to go around. Jesus vous aime! (Jesus loves you!) in French is the name of the campaign to raise funds for the purchase of hymnals and Bibles.

tions dollar for dollar. Please consider helping to place the Word of God into the hands of fellow Lutherans who are living in extreme poverty.

Unity Building Committee Formed

The newly formed building committee at Unity has met and reviewed preliminary drawings for a new house of worship on the property on the corner of Hale and Bennett, located a few blocks away from their current location. Seven members of Unity on the committee are being assisted by members of other congregations and the PALM Board.

The committee includes (left to right) Carol Grace, Larue Smythe, Ron Garrett, Wanda Gary, Joyce Harvey, Viney Ellison, Charles Beasley and Rev. Reholma McCants. For more information contact Rev. McCants at 412.731.2811.

by Terry Nelson-Taylor



Congregation News

Lenten Suppers, Easter Breakfasts and High Tea Some of

Ascension, McCandless

Congratulations to Justin and Tyler Vasil, Cub Scouts who received their God & Me religious emblem from the God & Country award program, on February 4.

Music director Janet Marquette is teaching Sunday school children handbells with color-coded bells and music.

Bethel, Glenshaw

Bethel is planning a Christian Seder on Sunday March 25th from 5-7 p.m. They will conduct a Seder, discuss the different parts and connect it to the Last Supper, and end with a full dinner. If you would like to attend the Seder, call Gary Swanson at 412.486.5777. There are plenty of seats available, and people who have attended in the past have enjoyed it greatly. Midweek Lenten services start at 7:30 p.m., preceded by a soup and salad dinner at 6:30 p.m.

Calvary, Murrysville

The women's group is packing college boxes to be sent to the college students that are away from home; boxes were sent to the military in December. They are also having a "white elephant auction" for a night of great fun. Angela Weeks' Girl Scout troop is sending any remaining unopened boxes of cookies to the troops in Iraq.

A new Saturday night service began on February 3rd; 42 attended. Bible study will be "Bringing the Joy of the Lord Back into your Life" on Sunday mornings during Lent. An Easter egg hunt will be held on April 7 for the community. The new Lutheran Service Book will be dedicated on Transfiguration Sunday and 12 new members will be received into the church.

Christ Lutheran, Forest Hills

A call was extended to Rev. Ronald Bright of St. Luke, Lyndon Station, WI, who visited the congregation in mid January with his wife. No word of a decision at press time.

The Quilters Group is offering to other quilting groups some of the abundant resources of fabric and quilting materials that have been collected over the past few years. The Group has more than enough to continue the quilt ministry at Christ Lutheran and still seed other interested

groups. Please contact the church secretary at 412.271.7173. We welcome the opportunity to share these resources.

The congregation has two indoor flag poles with the Lutheran and American flags suitable for the worship or fellowship areas of a church. If you would like one or both, contact the Christ Lutheran Church secretary at 412.271.7173.

Thrivent Care In Congregation is again sponsoring the annual Easter Event for children of the church, school, and community on Saturday, April 7 from 9:45 until noon, with lunch following the activities. Children will rotate with their age group to a devotion, craft, egg dyeing, and an egg hunt for children up through the fifth grade. It is free but you are requested to please pre-register at 412.271.7173 by Tuesday, April 3.

Congratulations to James Maley, who received dual degrees from West Virginia University in aerospace and mechanical engineering. Jim, grandson of Bill and June Kolb, is the eighth engineer in the Kolb family.

Congratulations to Zach Chick, who graduated from Penn State University with an accounting degree. He spent his last semester in Central America studying international business.

Concordia, Brentwood

Seminarian James Moisher and his wife Renee will visit April 20-22; Sunday school students are supporting James with mission offerings.

First, Sharpsburg

Members and friends enjoyed a Valentine's banquet on Saturday, Feb. 10, with a nice Swiss steak dinner. Ventriloquist Cindy Speck did a great job entertaining the crowd with her crew of suitcase-based friends. Feb. 17 First played host to the St. Matthew auction supporting the student assistance fund. Willis Volland and staff provided a great meal for the event.

A family movie and games night was held Friday, Feb. 23. We saw the movie, "Pirates of the Caribbean." A work day for men and women on March 3 addressed painting and other repair issues. Lunch was provided. During Lenten season several pieces of new music for choir and congregation will be introduced. On Wednes-

days services at 7 p.m. follow soup and sandwich suppers at 6 p.m..

Congregation is gearing up for the second round of *Ablaze!* home meetings, starting after Easter. Youth activities are being planned for March and April.

Good Shepherd, Whitehall

Sunday school students sent \$450 to Unity Lutheran and \$75 to Zion, Accident for the Sri Lanka Christmas Cultural program. Offerings are being gathered now for Habitat for Humanity.

Joel Meyer is finishing his fourth year at Concordia Seminary-St. Louis, and in the fall David Strussenberg, son of Rev. Dan and Diane Strussenberg, will enter the seminary.

Congregation is again participating in the Baby Bottle Campaign for the local Pregnancy Resource Center.

Redeemer, Oakmont

The youth group sponsored a Sweetheart Breakfast on February 10 to raise funds to attend the Higher Things conference in Minneapolis July 24-27. The youth are also available for household jobs, snow shoveling, etc. in exchange for donations for the trip.

Deaconess Cheryl Naumann is planning a Woman-to-Woman (W+W) spring retreat for April 27-28. Retreat theme is the Song of Solomon. W+W sessions are held every Friday at 9:15 a.m. and again at 12:30 p.m.

Over \$600 was raised through two "Grab 'n Go" lunches for the purchase of chairs for the fellowship hall.

January's chapel offering was shared with The Pittsburgh Lutheran Center for the Blind and The Lutheran Blind Mission in St. Louis.

St. John, Millvale

Easter cards and other items will be sent to overseas troops, courtesy of the LWML. Congregation donated \$2000 towards the St. Matthew Student Assistance Fund.

St. John, Morrisdale

Sanctity of Human Life Sunday was observed January 21 with an afternoon discussion and DVD on stem cells and cloning.

St. Luke, Cabot

Mission trip opportunities include a group of 15 heading for Biloxi, MS

Activities Planned

March 17-24 and again June 16-23 to help rebuild homes devastated by Hurricane Katrina. A return trip to Saltillo, Mexico June 30-July 7 will assist constructing a church.

St. Matthew, Pittsburgh

This year the youth will be taking on a number of Lenten Soup Suppers in order to raise funds for their trip to the youth gathering in Orlando, FL. St. Matthew and Prince of Peace, Freedom youth have joined together to make a qualified family group for the gathering. Three youth and one adult from St. Matthew will be attending. In all eight youth and two adults will be attending from the two churches.

Zion, Accident

Rev. Keith Clow and Carrie Eckles were united in marriage on Sunday, February 11 at St. Paul's Lutheran Church in Fulton, Missouri.

Youth group sold Krispy Kreme doughnuts in February to support their trip to the National Youth Gathering in Orlando, July 2007.

A group from Zion traveled to Camp Restore in New Orleans for a week in February and helped with the restoration of Holy Cross Lutheran Church. Another group will be traveling from Zion during the last week in March.

Zion's LWML is joining with the LWML of St. John's in the Cove for a prayer service on Saturday, March 24 at 9 a.m.

Zion, Lawrenceville

A traditional Easter Breakfast will be held with French toast and bacon prepared and served by the men of the congregation. All proceeds will be matched by Thrivent and donated to Lawrenceville Meals on Wheels.

A first for Zion is the Ladies High Tea served with sandwiches and cookies and cakes on Saturday afternoon at 3 p.m., May 19th. A free-will offering will be collected and donated to Zion's Paint Fund.

Lent 2007 Themes

Several congregations will use Our Suffering Savior, a Concordia Publishing House Lenten plan. Meditations are drawn from the Isaiah 53 prophecies, some of the most pointed in all of Scripture, in their clear language concerning the more-than-patient character of the suffering Messiah, the actions He will suffer, and the effectiveness of His punishment on our account. The meditations carry themes such as, "By His Wounds We Are Healed," "Stray Sheep," and Maundy Thursday's "Bloodbath."

Ascension, McCandless — Suffering Servant Song, Isaiah 52 and 53

Calvary, Murrysville — Objects of the Passion: Ashes and Sackcloth, Stone, Sponge, Robe and Dice, Coins, Nails

Christ, Forest Hills — The Valley of Lent

Concordia, Brentwood — Christianity 101: Living the Catechism

Epiphany, Penn Hills — Christ on Trial. March 7 and 21 there will be Soup and Salad from 5:30-7 p.m. with worship following.

First, Sharpsburg — Our Suffering Savior, Isaiah 52 and 53


Redeemer, Oakmont — Our Suffering Savior, Isaiah 52 and 53

St. John, Millvale — Figures About the Cross; also, short devotional time each Wednesday at noon during Lent.

St. John, Morrisdale — Our Suffering Savior, Isaiah 52 and 53

St. Luke, Cabot — Coming Home from Exile: The Exoduses of Scripture

St. Matthew, Pittsburgh — The Hidden Glory of the Cross; soup suppers begin at 5:45 p.m. followed by worship at 7 p.m.



Mar. 2 — Dementia Workshop, Lund Care Center, Concordia Lutheran Ministries, Cabot, 9 a.m.-3 p.m.

Mar. 16 — Concordia University Kammerchor Concert, St. Luke, Cabot, 8 p.m.

Mar. 17 — Stephen Ministry Workshop, Calvary, Murrysville, 8 a.m.-1 p.m.

Mar. 24 — Spring Craft Show, Mt. Calvary, West View, 9 a.m.-3 p.m.

Apr. 22 — Concert of Sacred Music, Our Savior, Mt. Lebanon, 3:30 p.m.

Apr. 28 — 49th PALS Golf Scramble

Mt. Calvary, West View Seeking Crafters

Crafters needed to participate in a Spring Arts & Crafts Show on Saturday, March 24, 9 a.m. to 3 p.m. To register for a table, call Sarah Hoover, 412.761.8408.

Sign Up Now for 49th Annual PALS Golf Scramble

The 49th Pittsburgh Area Lutheran Golf Scramble will be held on Saturday April 28th. Gather your foursome and call the church secretary at Christ Lutheran Church at 412.271.7173 for more details. Hope all golfers in the area will come out to enjoy this great event that supports our area Lutheran Schools.



Mark R. Martens
PCS Certified "Class A" Clubmaker
724-941-0110 ♦ Cell 724-747-7805 ♦ Fax 724-942-9123

♦ HIGH PERFORMANCE GOLF - custom-fitted woods, irons & putters
♦ Re-shafting & Repairs ♦ Re-gripping ♦ Bags & Accessories
Rt. 19 - 3323 Washington Rd., McMurray, PA 15317
[Across from South Hills Chrysler]

Hours: Mon-Thurs 11-7 F Tues-Wed-Fri 11-6 F Sat 11-5
[Other times by appointment]
www.golfclubsandrepairs.com ♦ mark.martens@golfclubsandrepairs.com

Nar-Anon Family Group Meetings Held at Bethel

GLENSHAW—Family members of persons with substance abuse problems support each other and get education about how best to help their loved ones. The Nar-Anon Family Group at Bethel meetings are held on Mondays at 7 p.m. Call the church office for more information (412.486.5777).

Donald Hamm Insurance Agency

"Specializing in the needs of the Church"
Regional Representative:
Concordia Risk Management Church Insurance Program



993 Greentree Road
Pittsburgh, PA 15220
Business: 412-922-4848

National Lutheran Schools Week is March 4-11
“Transforming Lives” is 2007 Theme Under Multi-Year Theme
“Lutheran Schools—A Great Place to Grow”

Christ, Forest Hills

Six tons of recyclable paper are needed by March 31st so that the school can get a \$200 bonus in the Abitibi Paper Retriever recycling and fundraising program.

Bethel Preschool, Glenshaw

Preschool has ~23 children attending. Almost all the children are non-members (one is a member at Bethel, and one is a member at St. John's). Teacher Marcia Lindbloom and teacher's aide Cherie Henry have both served for many years and are very dedicated, providing an educational focus, with a consistent Christian message. Hoping to increase enrollment to about 30 next year.

Calvary Christian Preschool, Murrysville

Pasta Nite Dinner/Silent Auction

In celebration of National Lutheran Schools Week and its 10th anniversary, the PTO of Calvary Christian Preschool (formerly Calvary Child Development Center), Murrysville is planning its second annual Pasta Nite Dinner and Silent Auction with a St. Patrick's Day theme.

The event will be held on Saturday, March 3 at 5 p.m. Tickets are available at \$10 Adult and \$5 Child.

Activities for the children will include face painting, crafts and cookie decorating. Ernie Papay will provide musical entertainment. Funds raised will go towards the Student Scholarship Fund, Learning Center materials and to keep tuition rates stable.

For more information please see the Web site: calvarylcms.org/CCPschoolnews.html or call the church office at 724.327.2898.

by Audrey McVeigh

Good Shepherd Preschool, Whitehall

A Trike-a-Thon was held in February to raise money for St. Jude Hospital and to learn about bike safety; last year the preschoolers raised over \$1600 for St. Jude.

Little Lambs of Hope, Upper St. Clair

Little Lambs of Hope serves mostly Upper St. Clair and Peters Townships, but welcomes children from other communities. The Transition class for five-year-olds is a big hit because it uses a

Christian curriculum strong on academics, yet respects the integrity of a developmentally-appropriate early childhood experience.

Registration has begun for fall 2007. Classes are almost half full. On March 11th the little lambs will be singing two new songs at the annual Preschool Sunday service at Hope. *How Did Moses Cross the Red Sea* is an old VBS song familiar to many. *Have No Fear Little Flock* is printed in the new hymnal for the congregation to join in singing.

by Metteliese Ziegler

Redeemer, Oakmont

School students will host the Lenten Soup & Salad Suppers to benefit the school. The 7th and 8th grade classes raised funds for their New York City spring trip by offering Parents Night Out babysitting services on Valentine's Day.

St. John's Preschool, Millvale

St. John's Preschool is celebrating its 30th year of serving the preschoolers of Millvale.

Currently 59 students are enrolled; two are members of the church. Monday, Tuesday, and Wednesday we have a morning and afternoon class for 4-year-olds; Thursday and Friday we have a morning and afternoon class for 3-year-olds.

Deena Stipetich is the teacher; Kim Beran is the assistant teacher; Paula Reeder is the Librarian/Naturalist. An active board makes policy, tuition, and scholarship decisions.

The annual Preschool Spaghetti Supper is Sunday, March 11 from 4-6 p.m. Funds raised will be matched by Thrivent Financial for Lutherans.

St. Luke, Cabot

Okay, the children can stop praying for snow now—what a change from a month ago!



The love of Jesus knows no bounds. Carl Boltz, Haven III resident and St.



“Transforming Lives” 2 Cor. 3:18

Lutheran Schools—A Great Place To Grow
National Lutheran Schools Week 2007

Luke Lutheran member, with a few St. Luke kindergarten and first grade students.

On February 27, we invited the community to an informative open house; kindergarteners also registered that evening.

Once again, we've got big plans for Lutheran Schools Week, starting with K-8 participation in worship services, followed by our Parent-Teacher League's Soup, Pie & More Sale. During the school week the students will enjoy School Spirit Day; an ice cream social; Mismatch Clothes Day; faculty vs. 7th & 8th graders volleyball tournament; 8th graders & parents game night; Movie Day; no homework night; chapel partner board games; Bible trivia competition; Crazy Cap Day; and Dress up/Christian Jewelry Day. Students in grades 5-8 will also invite a special adult friend to join them on Friday for chapel, fun classroom activities, plus guest speaker KDKA meteorologist and ventriloquist, Dennis Bowman. Each classroom will also collect canned goods and non-perishable items for the St. Luke food pantry.



Second graders share Fruits of the Spirit at chapel.

Our Fruit of the Spirit for March is FAITHFULNESS; thus, we will strive to "keep the faith", though we be buffeted by sub-zero winds, inches of blowing snow, and layers of ice! On March 16, we'll hold our annual K-8 Art & Science Fair, an evening when the entire school is overflowing with scientific displays, creative art projects, and St. Luke families. In addition, the Concordia College choir, *Kammerchor*, from Mequon, WI, will be singing that evening as part of our opening devotions.

Current enrollment is 207 in Pre-school-8th; just over half of the students are members of St. Luke. The school has 12 teachers, Pre-8th; plus part-time teachers in music, instrumental music, advanced science, upper grade mathematics, art and physical education, in addition to numerous volunteer aides.

by Sharon Ambrose

St. Matthew Christian Academy, Pittsburgh

St. Matthew has 19 students enrolled in K-3rd grade, of which six are LCMS, one ELCA, one non-Lutheran and 11 unchurched. Cheryl Haberman teaches Kindergarten and 1st grade; Mark Shields, principal, teaches 2nd and 3rd grades.



Over half of the upper-grade class, including all second-graders, has now passed the keyboarding course and is doing all assignments on computer except for workbooks and math, using word processing programs built into the computers. All students in the class are expected to pass before the end of the school year. Assignments are done on small notebook computers powered by AA batteries, from Tandy and Cidco. The Tandy units transfer files to desktop computers by a serial cable, while the Cidco units use e-mail. Using the small computers makes it easy for the teacher to check assignments for mistakes. For work which is still done using pencil and paper, long-lead mechanical pencils have taken the place

of wooden pencils, eliminating lines at pencil sharpeners and a great deal of noise in the classroom. The 4-inch, 1.1-mm leads last an average of two weeks, and replacement is quick and easy.

The St. Matthew Student Assistance Fund auction held at First Lutheran Church in Sharpsburg on February 17 raised \$6,800. We thank all who donated and attended for the tremendous success of the auction! There were both silent and verbal auctions, and plenty to eat and think. We greatly appreciate all the work done by Jenny Pearson and Norm Huelsman, as well as all volunteers who helped to set up and run the auction. Decorations were made by St. Matthew students.

St. Matthew students will be joining those from all of the Pittsburgh Area Lutheran Schools in celebrating National Lutheran Schools Week, March 4-11. All week long, the school will be carrying out a service project by bringing in food for the St. Matthew Food Bank. Monday, March 5 is Hat Day and Pasta Day. On Tuesday, March 6, older students will read to younger students, and canned goods will be brought in. Wednesday, March 7 is Ultra Dress-Up Day and Cereal Day. Thursday, March 8 is Food Bank Day, set aside for counting how much food has been brought in the three previous days. There will be a visit to the Carnegie Science Center on Friday, March 9.

St. Matthew students enjoyed playing volleyball and Math 24 on their visit to St. Luke Lutheran School in Cabot on February 23. Math 24 is a multifaceted game involving various combinations of numbers and the four mathematical operations. Combinations include operational results as well as matching factors. Incorrect answers may be challenged by other players. The player or team with the most points wins the round.

Sessions attended by St. Matthew teachers at the Eighth Annual Pittsburgh Christian Classical Education Conference on February 24 included: Building a Deeper Understanding of Contemporary Culture, Eyes to See: Appreciating Art with Children, Ears to Hear: Appreciating Music with Children, Reaching the Reluctant Writer, and Teaching Wisdom: Absorption or Application. The conference was sponsored by the Blackburn Study Center.

144 bottles of Gatorade are stockpiled for the opening of the Mileposters cycling season in April. A high priority for the first ride is the new segment of the Allegheny Highlands Trail between Frostburg and Cumberland, Maryland.

A camping trip on the paved, 78-mile Little Miami Scenic Trail in southwestern Ohio is planned for May. A possibility for June is Pittsburgh-Washington or Pittsburgh-Little Orleans, traveling the Great Allegheny Passage and the Chesapeake & Ohio Canal towpath. The earliest trips may have to be on selected paved trails because of the winter-softened ground beneath limestone-surfaced trails. Paved trails besides the Little Miami include the nearby Eliza Furnace and Panther Hollow Trails, as well as the Arrowhead Trail; more distant venues, in Ohio, are the Conotton Creek Trail, the Holmes County Trail, and the Kokosing Gap Trail.

by Mark Shields, Principal

Trinity Preschool, Monroeville

March means Lutheran School Week and fun at Trinity Lutheran Preschool. We begin our celebration on Monday, March 5 with Hat Day. Our four year olds will wear hats they brought from home. We will do math sorting, counting, and graphing. Our hats will be used to do some dancing, tossing beanbags into them, and various other fun activities.

On Wednesday, we will have our International Day with the threes and fours. This has been a tradition for many years. The children learn a little about the countries of their ancestors. Moms come and read stories, dance, play games, music, have information and/or food from the countries. On Thursday our Together With Twos will be having a Teddy Bear Picnic. Friday for the combined class will be a chance to dress as a nursery rhyme character or favorite book character. Finally on Sunday all of our students and their families are invited to the worship service. They will sing some of their favorite Jesus songs. Mrs. Johnston is teaching the threes and fours sign language to "Jesus Loves the Little Ones."

The Preschool Board will host a Continental Breakfast following the worship service. The artwork from the Monroeville Public Library Art Show in February will be on display in the Fellowship Hall.

We currently have two teachers and one aide working with two preschool classes. There are five families enrolled in the Together With Twos class that meet one day a week.

There are 12 students enrolled in the multi-age class that meet three days a week.

by Kathy Sourbeer, Director

Annual St. Matthew Auction Attendees Raise \$6,800 In spite of Snowy Weather



SHARPSBURG—On Saturday Feb. 17th, an auction was held for the Student Assistance Fund of St. Matthew Christian Academy. Over 80 people attended a dinner and auction on a snowy evening at First Lutheran, Sharpsburg. About \$6,800 was raised and contributions are continuing to be received.

Thrivent Financial for Lutherans will be matching a portion of the donations. If you are interested in making a donation, please make checks payable to St. Matthew Lutheran Church and earmark for the Student Assistance Fund. Mail all contributions to St. Matthew Lutheran church, 600 East North Avenue, Pittsburgh 15212.

There is a great need for assistance for the students at St. Matthew in the Northside. Please consider participating in this annual event by mail if you can't enjoy the auction!



2007 Annual Easter Flower Sale Supports St. Matthew Students

PITTSBURGH—St. Matthew Christian Academy is an urban Christian school dedicated to sharing the Good News of Jesus with the children of Pittsburgh and surrounding area. There is great diversity among our students, however, many of them are economically disadvantaged. Our goal is to welcome ALL students, not just those to whom God has granted financial comfort. To this end, we have created a special Student Assistance Fund to enable students from any economic background to have this opportunity. We rely on the love and charity of those in the Christian community, who have a heart for this ministry, to help make a Christian education possible for these students.

This year, we are again sponsoring an Easter flower sale. All of the proceeds will go to the Student Assistance Fund. We have contracted with Pittsburgh Cut Flower Co. and would ask that you please place your congregation's Easter flower orders with us. We will deliver the flowers directly to your church.

We are offering six-inch pots of Lilies, Hyacinths, Tulips and Mums for \$8 each and Azaleas for \$15 each. Each plant will come with foil pot covers. Please have your members order their flowers by Sunday, March 18th. Then call Janet Seitz at 412.323.0857 and place your total order no later than March 23rd. Deliveries will be made on April 6th and 7th. Arrangements will be made with each individual church. Please make your check out to St. Matthew Lutheran Church, for the total order, and mail to the church by March 30th. If you have any questions, please contact Janet Seitz by phone or e-mail her at janetseitz@hotmail.com. We sincerely appreciate your support.

In Christ,

St. Matthew Lutheran Church and Christian Academy

Your Ad Here

Pittsburgh Area Thrivent Branches are invited to support the Pittsburgh Lutheran through event advertising. An ad this size only costs \$35 per issue.

Announce your next fundraiser here. Deadline is the 15th of each month. Submit the "who, what, when, where, why and how" and we'll do the rest.

Contact:
Kate Hallock, Editor
724.935.9595
kahallock@aol.com

 Thrivent Financial for Lutherans™
A Century of Serving the Lutheran Community™

Photos by Mark Shields and Terry Nelson-Taylor. Above left, the auctioneer starts the bidding. Bottom left and right, silent auction browsers. Top right, a bidder raises a paddle.

Primary Mission Target: Pittsburgh's Urban Youth Need St. Matthew

PITTSBURGH—St. Matthew Lutheran Church, North Side, Pittsburgh is looking for schools, congregations, partners, or individuals that are interested and committed to doing mission work through an urban Pittsburgh Lutheran school.

Lutheran school ministry here in Pittsburgh can be traced back to the 1830s with First Trinity Lutheran Church and 1861 with St. Matthew Lutheran School. For the first 160 years, the Lutheran school was a primary way of passing on the Christian faith from one generation to the next. In fact, thousands of students have gone through Lutheran schools here in Pittsburgh. However, over the past ten to twenty years the Lutheran (LCMS) presence has declined both in congregations and schools. More and more Christians have moved out of the city leaving Christian congregations including our own Lutheran congregations without the resources to do school ministry. In fact, many of our own congregations have declined to very small numbers and are on the brink of closure. St. Matthew Christian Academy is the last existing LCMS Lutheran school in the city of Pittsburgh and the last urban Lutheran school in the Eastern District of the LCMS.

We believe that we are called to proclaim the Gospel to all people of all levels of society. Today, urban Pittsburgh makes up a significant population of socio-economically challenged households and unchurched or "under" churched families. Many of the children and families served by our school come from this background. Most qualify for tuition assistance above the tuition rates already reduced by contributions from our own congregation. The mission work is here!

The work here with our school, St. Matthew Christian Academy, is just too big for us as a small congregation alone. We lack both human and financial resources to sustain the school ministry by ourselves. The most important need is human resources. We are always in need of helping hands to donate time and energy to carry out various school functions and activities, but most of all to share the love of Jesus with a child. There are so many possibilities

like reading to a child, assisting a teacher, preparing teaching aids, helping a child with a math problem, sitting with the children during chapel, or just praying with a child. Please keep in mind that we are in need of people to donate their time and services in order to keep this ministry going.

We believe St. Matthew has a location with great visibility and is situated in an economically mixed area of north urban Pittsburgh primed for this kind of ministry. However, we also believe there may be a better location. If so, we stand ready and willing to commit to being a partner wherever this ministry might be in urban Pittsburgh.

We are looking for schools, congregations, partners, or individuals that are interested and committed to assisting and seeing that this type of ministry exists for Pittsburgh children and families. We are looking for long-term relationships with people who share our vision and want to help us see it happen. Please prayerfully consider this request and let us know as soon as possible what avenues are possible and how you can help.

Because the next school year is quickly approaching we are asking the other Lutheran schools and congregations in the greater Pittsburgh area to prayerfully consider joining with us in a cooperative ministry. Also, we have met with Pittsburgh Area Lutheran Ministries and Pittsburgh Area Lutheran Schools to seek their input and support for the concept.

Once again, we believe that the children of Pittsburgh are a primary mission target for reaching the lost with the Good News of salvation through Jesus Christ. We are passionate and convicted because of Jesus and what He has done for us. Our confessional faith and our commitment to sharing the Gospel with the lost here against unbelievable odds is still the ongoing reason for an urban Lutheran school in Pittsburgh. We are convinced that this is still a primary way of sharing the Word of God providing children and families opportunities to grow in faith and to know that the Lord Jesus Christ died for them and that through His death and resurrection He made

it possible for them to have eternal salvation.

With great enthusiasm and anticipation we look forward to your reply.

In Jesus our precious Savior,

St. Matthew Lutheran Church and Christian Academy

If you wish to partner or participate in any way please contact the church at 412.321.7720 and speak to Jennifer Nelson, Administrative Assistant, or you may write to St. Matthew Lutheran Church, 600 E. North Ave., Pittsburgh, PA 15212.

by the Rev. Schumacher

Pittsburgh Lutheran Chorus Has Spring Dates Available

If you are celebrating a church anniversary or dedicating something special, the Pittsburgh Lutheran Chorus is available to sing. Churches are invited to host an afternoon or evening hour-long concert. You can use the event as a fundraiser. Contact the director, Ruth Miller at 412.486.6738 to schedule April 1, 15 or 29.

PALM Donations

Send your donations for the Pittsburgh Area Lutheran Ministries to:

PALM Treasurer
Attn. Cynthia Barnes
First Trinity Lutheran Church
531 N. Neville Street
Pittsburgh, PA 15213

Mail donations for **The Pittsburgh Lutheran** to the editor:
The Pittsburgh Lutheran
107 Saybrook Harbor
Bradfordwoods, PA 15015-1319

Alternative Listening...

Tired of the same old-same old Sunday evening radio? Tune in to WORD-FM 101.5 from 9 p.m. to 10 p.m. to hear a lively discussion of issues, doctrine and Scripture on *Let's Talk About Jesus*. Rev. Donald Matzat hosts the one-hour radio program sponsored by Zion Lutheran Church, Bridgeville.

Join Concordia's Legacy Society Become Eligible for an Invitation to the Annual Appreciation Lunch

CABOT—The Fourth Annual Appreciation event for members of Concordia Lutheran Ministries' Legacy Society will be held at The Pittsburgh Field Club in Fox Chapel on Tuesday, June 19, 2007* and hosted by Concordia's President and Chief Executive Officer, Keith E. Frndak, as well as Concordia's Board of Directors and management team.

Concordia is pleased to announce that Rev. Barry Keurulainen will be our guest speaker this year. In addition to serving as senior pastor at St. Luke in Cabot, he is currently a Concordia board member. Entertainment will be provided by "Steven Vance Strolling Violins."

At this time, the Development Office is compiling a guest list for this event. We wish to make certain we don't miss any potential member.

In 2000, Concordia's Legacy Society was established as a way to recognize and thank gifts such as bequests through wills or living trust gifts. These include gift annuities and charitable remainder trusts, retirement plans or life insurance policies that name Concordia as beneficiary.

Membership to Concordia's Legacy Society also includes a one-time opportunity for donors who have pledged or presented a gift of \$5000 or more to the Capital Campaign "A Time To Build ..." toward the Lund Care Center Expansion. Eligible are those who may have already made a donation to the Lund Care Center Expansion Capital Campaign in 2005 and plan to add additional gifts totaling \$5000 until November of 2007 or those who make a \$5000 pledge at this time. If you commit to a pledge of \$5000 any time until November, you will have one full year from the date of your pledge to fulfill that pledge. As one of Concordia's lead contributors, we are both honored and privileged to acknowledge your benevolence in this way.

The Legacy Society's purpose is threefold:

- ◆ to honor and thank those special friends whose thoughtful estate planning will advance the financial strength of Concordia

- ◆ to foster interest in advancing the mission of Concordia through planned gifts
 - ◆ to recognize the resident care and capital project initiatives supported by planned gifts
- Member benefits include:

- ◆ Invitations to special events
- ◆ Updates on tax-advantaged charitable estate-planning opportunities
- ◆ A premium gift as a symbol of our gratitude
- ◆ Recognition in newsletters and annual reports

If you would like to be a member and require additional information, please contact Shirley M. Freyer, Director of Development at 724.352.1571, ext. 8266.

* This is a revised date.

Pastoral Vacancies (and Coverage)

Christ, Forest Hills (Rev. Reholma McCants and David Mozeik, Lay Deacon)

Concordia, Brentwood (Rev. Robert McCannless)

First Lutheran, Sharpsburg (Rev. Mark Ruppert)

Hope, Upper St. Clair (Rev. Jamison Hardy and Vicar Timothy Fitz)

Pentecost, Avella (Rev. Scott Kuntz)
St. John, Brackenridge (Rev. Gene Lenk)

St. Paul, Braddock (Rev. Emil Lavcek)

St. Paul, New Kensington (Rev. Jack Hartman)

Trinity-Deaf, Pittsburgh



On Campus—What's New at Concordia Lutheran Ministries



CNA Class Orientation held in the Lund Conference on Fri, Feb. 9.



A volunteer from National Aviary showing several residents one of his parrots at Haven III. Below, Haven I resident Bess Higgins enjoys a parrot.



Below, left to right: Haven I residents Ann Pfeifer (St. Luke), Pauline Stitt, Thelma Wiegand, Jeanne Hauer (Mt. Calvary), Peg Schelien (St. Luke), Eleanor Schwalm (St. Luke), Garnet McCall, Jane Norris collected and sorted gifts for Valentines Day for the children of the Unity Lutheran After-school Program.



Executive Assistant to the President Hired at Concordia

CABOT—Butler resident Karen Daum recently filled the position of Executive Assistant to the President and C.E.O. at Concordia Lutheran Ministries.

Karen, a graduate of Grove City College with a double major in International Business and Business Administration, comes to Concordia after most recently working at the clothing retail store Christopher and Banks, as well as running her own child care business.

Her responsibilities include scheduling, recording all boards meetings, maintaining organization of Concordia President and C.E.O. Keith Frndak's schedule, and acting on behalf of the president. Karen said Concordia's faith-based vision and eagerness to help other people are what drew her to the organization.

Karen came to Concordia a week before the Nov. 5 fire that destroyed the Haven 1 complex, but she said that experience, as heartbreaking as it was, only pulled her closer to the staff and residents.

"Right off the bat I was so amazed by how caring and nurturing the staff was through the whole ordeal, and that was really the point when I knew I was in the right place," Daum said. "Beyond the staff though, to see the perseverance and attitude of the residents, and how positive they stayed, was simply inspiring."

Karen lives in Center Township, Butler County with her husband Dave, their two children, Josh - 13 and Kaylie - 17, and their dog Sarah. Her interests include traveling (she has been to Europe twice and the Bahamas once), going to the movies, and teaching Sunday School at First English Lutheran Church in Butler.



Concordia Independent Living Resident Celebrates 85th Birthday

CABOT—Concordia Lutheran Ministries Haven II resident Doris Fahringer, formerly of Apollo, celebrated her 85th birthday with a family dinner at her home on Feb. 3.

Born in Frederick County, MD on Feb. 3, 1922, the former Doris M. Burall married David C. Fahringer on May 22, 1943. David passed away on June 30, 2006. The couple had one child, Lynne F. Schneider, of Leetsdale, PA, and four grandchildren.

She and her husband came to live at Concordia November of 2005.

Fahringer was a homemaker her entire life, focusing her attention on being a housewife and mother. She is a member of Cabot United Methodist Church and is an active participant in her Bible Study. She enjoys spending her free time reading (especially history), traveling, and golfing.



Concordia Lutheran Ministries Receipts

January 19, 2007 through February 16, 2007

Congregational Donations

Holy Trinity Lutheran Church, Albion - Zion Lutheran Church, Bridgeville - Grace Lutheran Church, Palisades Park, NJ - Redeemer Lutheran Church, Oakmont - Ruthfred Lutheran Church - St. Luke Church & School.

General Donations

Albert G & Joan L. Lucas - Calvin & Alma Eggers - Richard & Susan Boggs - Amy L. Schwalb.

Good Samaritan Endowment Fund

John W. Toperzer, Sr. In memory of J. Paul Black by: Elizabeth Senulis. In memory of Marie Rehkopf by: Geraldine Williams. In memory of Dorothy Schultz by: Charles & Elaine Curtis. In memory of residents of Concordia Lutheran Ministries by: Keith Frndak.

Capital Campaign Fund

Edith Waltenbaugh - Frank Fowler - John & Betty Jenny - John & Barbara Schneidmiller - Mary Jane Scully - Gloria McConville - Karen Hoblak - Irene Phillips. In memory of Corinne Brick by: Daniel Brick. In memory of Edna Trettel by: Harry & Lois Shindedecker. In memory of Edna Trettel, Marie Rehkopf, Janet Vogel & Eleanor Reiss by: Bill & Shirley Freyer. In honor of the birthday of Mildred Molkenthin by: Bill & Shirley Freyer. In memory of Janet Vogel by: Walter M. Vogel Jr.

Memorial Contributions

In memory of Dorothy Schlutz by: Bethany & Ernest Deweese, Raymond Curtis, David & Sharon Robinson. In memory of Walter Thicke by: Alfred & Lola Maurhoff.

Staff Appreciation Fund

In memory of Edith Fowler by: Helen Fletcher.

Concordia at Ridgewood Place

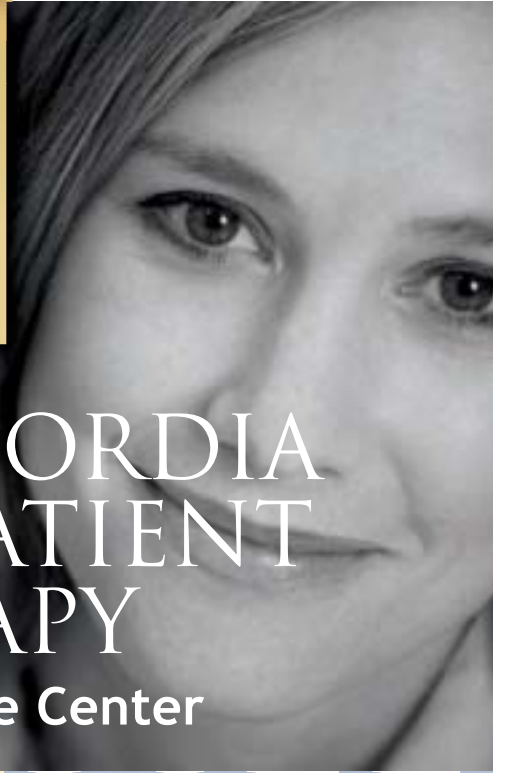
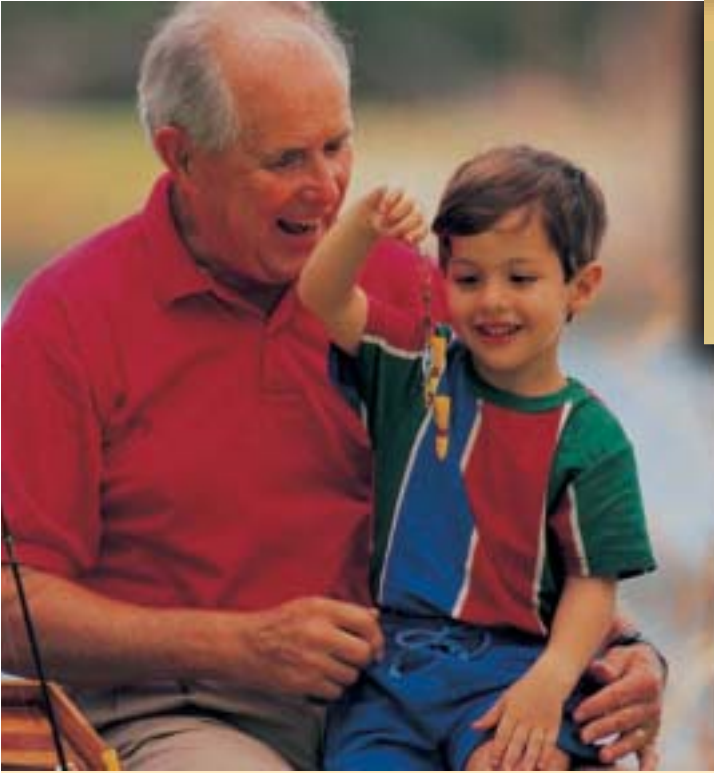
Ronald & Lisa Kazimer.



Betty Berg H2 resident, Pauline Stitt H1 resident

Did You Know?

Daylight Saving Time arrives early this year. To avoid being late for church on **Sunday, March 11**, turn your clocks ahead one hour the night before when you go to bed.



CONCORDIA OUTPATIENT THERAPY

at Lund Care Center

HELPING YOU GET BACK TO

LIFE

If you need rehabilitation following an accident, illness, or surgery, there's a resource in our community that can help you get back to life more quickly -- Concordia Outpatient Therapy at the Lund Care Center. Our experienced therapy professionals combine compassionate caring with state-of-the-art equipment to speed your healing.

Concordia also takes outpatient therapy to a new level with a specialized HydroWorx® aquatic therapy pool – the only one in the area. It's ideal for low-impact rehabilitation therapy including sports-or work-related injuries and many other conditions. Concordia Outpatient Therapy at the Lund Care Center can help you get back to life.

Please call us at **724-352-4535** and we'll set up a convenient time for your evaluation.

Physical therapy

Occupational therapy

Aquatic therapy

Speech/Language pathology



Concordia Lutheran Ministries | 134 Marwood Road, Cabot, PA 16023 | Toll Free: 888-352-1571 | concordialm.org
Concordia Lutheran Ministries provides a lifetime continuum of care including independent retirement and assisted living, adult day care, visiting and private-duty nurses, inpatient rehabilitation therapy, skilled nursing care, and hospice services.